



Cdk11A/B Polyclonal Antibody

Catalog No	YP-Ab-16698
Isotype	IgG
Reactivity	Human;Rat;Mouse;
Applications	WB;ELISA
Gene Name	CDK11A/CDK11B
Protein Name	Cell division protein kinase 11A/B
Immunogen	Synthesized peptide derived from Cdk11A/B . at AA range: 190-270
Specificity	Cdk11A/B Polyclonal Antibody detects endogenous levels of Cdk11A/B protein.
Formulation	Liquid in PBS containing 50% glycerol, 0.5% BSA and 0.02% sodium azide.
Source	Polyclonal, Rabbit,IgG
Purification	The antibody was affinity-purified from rabbit antiserum by affinity-chromatography using epitope-specific immunogen.
Dilution	Western Blot: 1/500 - 1/2000. ELISA: 1/10000. Not yet tested in other applications.
Concentration	1 mg/ml
Purity	≥90%
Storage Stability	-20°C/1 year
Synonyms	CDK11A; CDC2L2; CDC2L3; PITSLREB; Cyclin-dependent kinase 11A; Cell division cycle 2-like protein kinase 2; Cell division protein kinase 11A; Galactosyltransferase-associated protein kinase p58/GTA; PITSLRE serine/threonine-protein kinase C
Observed Band	90kD
Cell Pathway	Cytoplasm. Nucleus.
Tissue Specificity	Expressed ubiquitously. Some evidence of isoform-specific tissue distribution.
Function	caution:The sequence shown here is derived from an Ensembl automatic analysis pipeline and should be considered as preliminary data.,
Background	This gene encodes a member of the serine/threonine protein kinase family. Members of this kinase family are known to be essential for eukaryotic cell cycle control. Due to a segmental duplication, this gene shares very high sequence identity with a neighboring gene. These two genes are frequently deleted or altered in neuroblastoma. The protein kinase encoded by this gene can be cleaved by caspases and may play a role in cell apoptosis. Alternative splicing results in multiple transcript variants. [provided by RefSeq, Sep 2015],



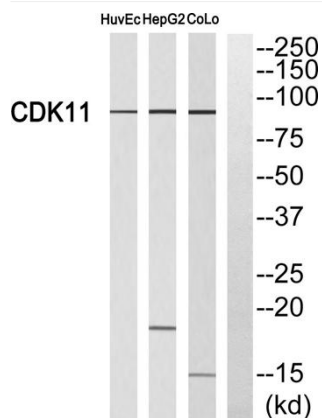
matters needing attention

Avoid repeated freezing and thawing!

Usage suggestions

This product can be used in immunological reaction related experiments. For more information, please consult technical personnel.

Products Images



Western blot analysis of CDK11 Antibody. The lane on the right is blocked with the CDK11 peptide.